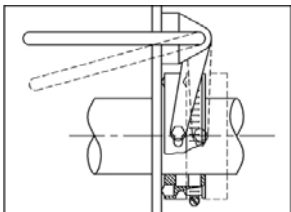


HORIZONTAL SCREW LOADER



PrimeMove™
COZZINI MATERIAL HANDLING SYSTEMS



Watertight shaft seals



Optional product agitator prevents bridging

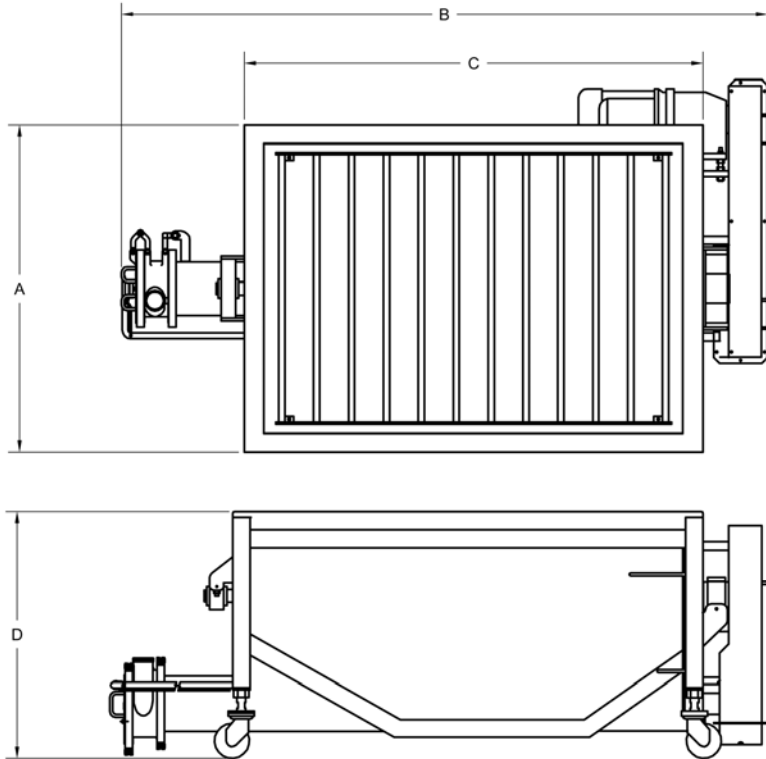
HORIZONTAL SCREW LOADER

- Unique, quick-release, watertight shaft seals for full washdown sanitation.
- Ø9" (230 mm) diameter heavy duty, stainless feedscrew auger.
- Optional agitator is available to prevent bridging of product.
- CSL units available in capacities ranging from 500 lbs. (230 kg) to 10,000 lbs. (4500 kg).
- USDA accepted and CE approved. Built in conformity with AMI sanitary equipment design principles.

HORIZONTAL SCREW LOADER

Cozzini Screw Loaders (CSL) are ideal for storing and transferring products from dumpers, mixers, conveyors and other sources.

The heavy-duty horizontal screw loader utilizes a feedscrew in combination with a vane pump that transports product via piping for delivery to the next processing station.



HORIZONTAL SCREW LOADER											
DIMENSION*		A (length)		B (width)		C (tub length)		D (height)		Agitator	
<i>Lbs</i>	<i>kg</i>	<i>inch</i>	<i>mm</i>	<i>inch</i>	<i>mm</i>	<i>inch</i>	<i>mm</i>	<i>inch</i>	<i>mm</i>	<i>hp</i>	<i>kW</i>
500	225	51	1292	79	1995	55	1384	33	826	2	1.5
1000	450	55	1392	105	2672	79	1995	33	826	2	1.5
1500	700	48	1230	86	2184	59	1508	40	1016	2	1.5
2000	900	56	1416	105	2659	80	2026	37	940	5	4
2500	1000	56	1416	106	2692	80	2026	48	1223	5	4
3000	1400	57	1436	110	2794	77	1956	53	1346	5	4
4000	1800	68	1721	115	2911	83	2102	53	1346	5	4
5000	2300	71	1794	130	3299	92	2335	53	1346	5	4

*Dimensions can vary based on customer requirements or modifications to equipment

Feedscrew (all models)	
20 hp	15 kW

10/05 E